

BULLETIN 3

Brasov **meeting**



ORIENTEERING IN TRANSYLVANIA

10 - 12 OCTOBER 2025

***PROJECT CO-FOUNDED BY THE BRAȘOV COUNTY COUNCIL**

CUPRINS

01-03

WELCOME

04

BOM TEAM

05

COMPETITION SCHEDULE

06

COMPETITION DETAILS

07

HOW TO GET TO BRAȘOV?

08

RESTRICTED LOCATIONS AND
AREAS

09

CATEGORIES AND TIMING
SYSTEM

10

GENERAL INFO

11

ACCOMMODATION AND
TRANSPORT

12

FEE PAYMENT

13

AWARD CEREMONY

14-17

INFO ON

PROLOGUE VULCAN

SPRINT RÂȘNOV

MIDDLE DISTANCE VĂLĂȘOAIA, SĂCELE

LONG DISTANCE RÂȘNOV

18

TOURIST ATTRACTIONS

19-20

OLD MAPS & PARTNERS

WELCOME



*IULIU DOPOVECZ
PRESIDENT CS BABARUNCA*

For the third consecutive year, we welcome you to Braşov for our most important competition, for orienteers from Braşov. We are excited that this year we can offer you new maps in all three stages, thanks to the support received from the Braşov County Council, and we hope to enjoy three wonderful days of autumn and orienteering together.



*IONUȚ ZINCĂ
BOM RACE DIRECTOR*

I'm glad that this year we can challenge you with a competition held on three new maps: a sprint in a typical Transylvanian town, Râşnov, and two very different forest races. One of them features a great variety of forest types, clearings, and diverse terrain forms, while the other offers better runnability but a higher difficulty level, typical of the mountain area. Moreover, this year you can also enjoy a prologue, which will prepare you for what's coming in the three days of competition.

BOM TEAM

EVENT DIRECTOR	MADALIN IACOB
RACE DIRECTOR	IONUȚ ZINCĂ
IT MANAGER	OLIMPIU ALEXA-POP
EVENT SECRETARY	DIANA DOPOVECZ
REFEREE	ANCA STUPU
IOF ADVISOR	BOGYA TAMAS
VOLUNTEER COORDINATOR	CORNEL SPIRIDON
CONTROL MARKER TL	FLORIN ZBARCEA
LOGISTIC DIRECTOR	IULIU DOPOVECZ
COMPETITION JURY	LIVIU ȚÂNȚAR MIHNEA GRECU SIMION SUCIU

COMPETITION RULES

The event will follow:
The IOF Competition Rules for Foot
Orienteering. For WRE – The World
Ranking Event Rules for Foot
Orienteering.

CONTACT



CSBABARUNCA.RO



BRASOVOMEETING@CSBABARUNCA.RO



FOLLOW US

COMPETITION DETAILS

10 OCTOBER 2025

PROLOGUE

START 10:00

VULCAN

BOM SPRINT

START 16:00

RÂȘNOV

WRE MEDAL
CEREMONY

18:00

COMPETITION
AREA

11 OCTOBER 2025

EVENT OFFICE

08:00 – 09:30

VĂLĂȘOAIA-
SĂCELE

BOM MIDDLE

START 10:00

WRE MEDAL
CEREMONY

13:00

COMPETITION
AREA

12 OCTOBER 2025

EVENT OFFICE

08:00 – 09:30

RÂȘNOV

BOM LONG

START 10:00

RÂȘNOV

BOM MEDAL
CEREMONY

13:30

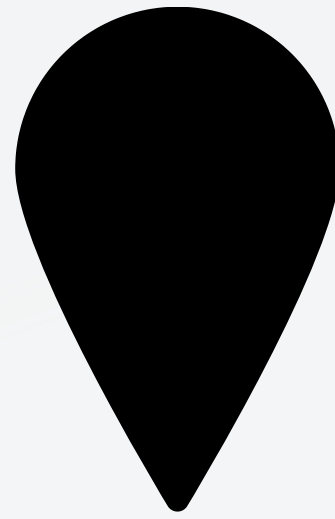
COMPETITION
AREA

COMPETITION DETAILS

Braşov O-Meeting, now in its third edition, is an important event on the orienteering calendar in Romania. This year, it also serves as the final stage of the National Sprint Championship, organized by the Romanian Orienteering Federation, attracting the best competitors from across the country.

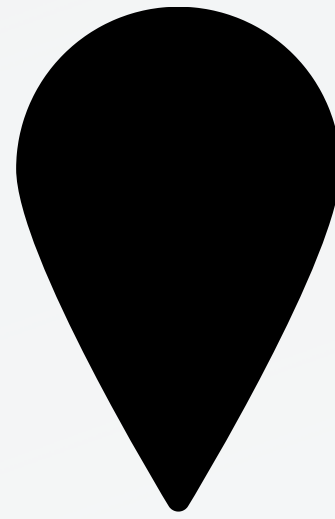
The competition consists of four stages: a Prologue stage, followed by two stages that are part of the **World Ranking Event (WRE)**, including a Sprint race in the historic center of Râşnov and a Middle Distance race in Săcele, Vălăşoaia. The final stage is a Long Distance Pursuit race, also held in Râşnov, adding an extra layer of strategy and endurance to the competition.

HOW TO GET TO BRAȘOV?



BY CAR

The easiest way to travel to Brașov is by car from anywhere in the country.



BUCUREȘTI HENRI COANDĂ

The distance between Henri Coandă Airport and Brașov is approximately 150 km. There are several options to get from the airport to Brașov: by car, by train, or by airport transfer. **ATTENTION to traffic towards Brașov – it can take between 3 to 6 hours!**



BRAȘOV GHIMBAV

Brașov-Ghimbav International Airport (AIBG) is located approximately 12 kilometers from the center of Brașov. Options include: Taxi, Uber/Bolt, or private transfer.



PRIVATE GROUP TRANSFER

Recommended: MarkSen Tour +40 721 439 439.

RESTRICTED LOCATIONS AND AREAS

REGISTRATION & RACE KIT

At the competition center, participants in the official categories can collect their race kit (including race numbers). Registration validation for these categories is done by paying the participation fee by the indicated deadline. For this event, on-site registration is accepted only for the Prologue race and for the Open, Open Children, and Family categories.

The center for validation and race kit collection will be open on Friday, October 10, in Vulcan from 08:30 to 11:00 and in Râșnov at the competition center from 13:00 to 15:00.

During the competition, validation will be open daily between 08:00 and 09:30 at the competition center in each location.

The event secretariat will respond to emails within 24 hours.



The quarantine area closes at 15:30 on 10.10.2025.

Entry into the restricted area is prohibited for those participating in the BOM competition. Athletes, officials, and teams who violate this restriction will be disqualified.

CATEGORIES AND TIMING SYSTEM

M10, M12, M14, M16, M18, M20, M21E, M21A, M35, M40, M45, M50, M55, M60, M65, M70, M75, M80+, W10, W12, W14, W16, W18, W20, W21E, W21A, W35, W40, W45, W50, W55, W60, W65, W70, W75, W80+, M85+, OPEN, OPEN CHILDREN*, FAMILY

Competitors in the MF18 and MF35 categories who wish to compete in the Sprint in MF21E, and in the other races in their own categories, can notify us by email, keeping in mind that the registration system does not allow registration in two different categories.

Open – category dedicated to adult beginner participants

Open Children – category dedicated to beginner participants up to 16 years old



The Sportident electronic timing system will be used. Competitors with a classic Sportident card will punch in the usual way, while SIAC users will be able to use the contactless system in all three stages.

Sportident Card
Rental SI cards are available free of charge for participants who do not have their own chip. The fee for a lost Sportident card is €75.

GENERAL INFO

APPEALS

Any appeal must be made in writing and submitted at the finish area as soon as possible. The protest will be reviewed by the competition jury, and the complainant will be informed of the decision immediately.

Appeals related to results must be submitted no later than 15 minutes after the provisional results have been published and announced by the MC.

MAPS AND CONTROL DESCRIPTIONS

All maps are prepared according to IOF standards. All maps are printed on water-resistant paper. No additional plastic bags will be provided. Control descriptions are in accordance with IOF standards and will be available at the start corridors.

START

At the start corridors, SI cards will be checked at -5 (pre-start/five minutes before the start time). Control descriptions will be available at -2.

In all official categories, competitors start without a start station. It is the responsibility of the competitors to start on time. In the Open, Open Children, and Family categories, there will be a separate lane with a Start station.



LATE START

Runners who miss their start time due to their own fault will be allowed to start, but their race time will be calculated from their original start time.

Runners who miss their start time due to an organizer error will be given a new start time. Start times cannot be changed to a VACANT minute.

FINISH

The marked corridor from the last control to the finish must be followed. After punching at the last station on the finish line, the time is stopped. Competitors read their SI card, receive a slip with intermediate times, and can refresh themselves. Toilets, food, first aid, and shops are available in all competition areas.

Athletes who need to withdraw from a race must report this at the finish and punch their SI card.

PROLOG

The first stage/Prologue does not count towards the overall ranking, and registration can also be done on-site. There are no pre-set start times or age categories. Courses are based on difficulty, and each competitor starts whenever they wish. An unofficial ranking will be made according to colors.

ACCOMMODATION AND TRANSPORT

We recommend authorized accommodations (e.g., Booking, Airbnb) in the cities of Braşov, Râşnov, and Săcele.

Distances Between Cities

Braşov – Râşnov: 22 km

Braşov – Vulcan: 37 km

Braşov – Săcele/Vălăşoaia: 25 km

Vulcan – Râşnov: 11 km

Râşnov – Săcele/Vălăşoaia: 47 km

Please note that you will need your own transport, as there is no public transport to the competition locations.



10 OCTOBER - VULCAN & RÂŞNOV

Prologue Stage Competition Center – Vulcan
Coordinates: [45.614020](#), [25.41145](#)

Registration and race kit collection: 08:30 – 11:00

Sprint Stage Competition Center – Râşnov
Piaţa Unirii – Coordinates: [45.59078](#), [25.46539](#)
Registration and race kit collection: 13:00 – 15:00

11 OCTOBER - SĂCELE, VĂLĂŞOAIA

Competition Center – Casa Vălăşoaia Restaurant,
Săcele Brădet area (between Brădet and Babarunca,
on DN1A)

Coordinates: [45.55501](#), [25.80459](#)

12 OCTOBER - RÂŞNOV

Competition Center – Valea Cărbunării Ski Jump
Complex – Râşnov
Coordinates: [45.57114](#), [25.47101](#)

FEE PAYMENT

MW > 18 + OPEN (+15), FAMILY

30 euro for all three stages, 12 euro per stage + 12 euro for the Prologue

MW < 16 + OPEN CHILDREN

20 euro for all three stages, 7 euro per stage + 7 euro for the Prologue

Fee Payment

Registrations are valid only after the fees have been received in our bank account, and the payment list is updated once a week, on Tuesdays. Please indicate your name and category in the transfer details.

Note

For those who have not paid the fees on time, cash payment will be accepted at the competition center.

Clubs may make payment via bank transfer (OP) after the invoice is issued.

Attention:

Registrations at the competition center are only accepted for the Prolog stage and the Open, Open Children, and Family categories. These are the only categories still open for registration.



DETALII BANCARE

EUR

IBAN: RO39 RNCB 0583 1383 3155 0006

SWIFT: RNCBROBU

BANK: Banca Comerciala Romana

ACCOUNT HOLDER: CLUBUL SPORTIV

BABARUNCA

ADDRESS: Str. N.Colceag 8, Săcele 505600
Braşov

OPEN / OPEN CHILDREN / FAMILY REGISTRATIONS

For the Open, Open Children, and Family categories, registration is done using the form on the competition page:

<https://csbabarunca.ro/bvom-3/>

Payment is made in the same way as for the other categories. Additionally, for these categories, registration and payment are also possible on the day of the competition.

AWARD CEREMONY

The WRE categories (MF21 Elite) will award the top 6 places in both WRE stages.

The Sprint stage and the Middle Distance (MD) stage contribute to determining the start order for the final Pursuit stage. Winners of all categories in the final Pursuit stage will be awarded the Winner's tee.



AWARDS CEREMONY SCHEDULE

Friday, 10.10, 18:00 – WRE Awards / FRO Sprint Awards

Saturday, 11.10, 13:00 – WRE Awards

Sunday, 12.10, 13:30 – BvOM Awards

The Sprint stage is also the final stage of the National Urban Sprint Championship.

The CN Sprint awards ceremony will be organized by the Romanian Orienteering Federation (FRO).

The awards ceremony will take place in the Finish area.



INFO ON THE STAGES

PROLOG VULCAN

Competition Center – Start/Finish Area
Coordinates: 45.614020, 25.41145

Map: 2023, revised, 1:10,000 – Black course; 1:7,500 – other courses
Cartographer: Ionuț Zincă
Course Setter: Ionuț Zincă

Toilets: None

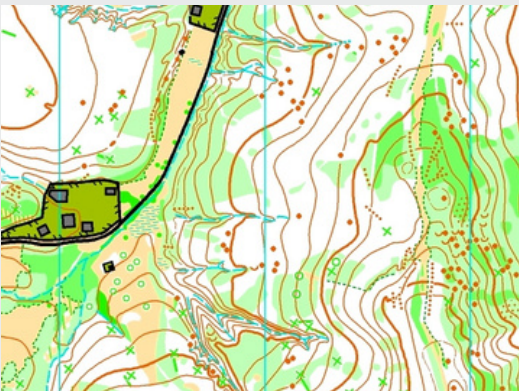
Parking: Near the competition center, on a meadow and along the roadside

Altitude: The area is at 606 meters above sea level

Terrain: Moderately hilly, with gentle slopes and some steeper sections along the ridges

Vegetation: Mixed forest, predominantly deciduous

Runnability and Visibility: Moderate to low — open forest areas are relatively runnable, while dense sections reduce speed and visibility



TEHNICAL DATA

Culoare	Lungime (km)	Climb (m)	Controale	Categorii incluse
BLACK	4,49	215	25	M18, W18, M20, W20, M21E, W21E, M21A, W21A, M35, M40, M45
RED	3,7	175	22	M16, W16, W35, W40, W45, M50
ORANGE	3,3	125	14	W50, M55, W55
YELLOW	2,68	105	15	OPEN TEH, FAMILY, M14, W14, M60, M65
BLUE	2,5	90	14	M12, W12, W60, W65, M70, W70, M75, W75, M80+, W80+
KIDS	2,14	75	12	OPEN KIDS, M10, W10

PARKING → COMPETITION CENTER/FINISH: 150 M

PARKING → START: 100 M

START: BETWEEN 10:00 – 11:30 (NO START LIST)
TEARDOWN OF THE COURSE: 12:30



INFO ON THE STAGES

SPRINT WRE - RÂȘNOV

Competition Center – Piața Unirii
Address: Piața Unirii, no. 3, Râșnov
Coordinates: 45.59078, 25.46539

Map: 2025, 1:4,000, Cartographer: Ionuț Zincă
Course Setter: Ioan Iacob
MW21E – map is double-sided

On the courses, there will be artificial barriers marked with symbol 708 (limit of prohibited area) and symbol 709 (prohibited area, hatched) for better readability. In the field, these will be marked with red-white tape at ground level.



QUARANTINE AREA: LOCATED 50 M BEHIND THE START AREA. THE QUARANTINE AREA, SITUATED AT THE FOREST EDGE, HAS NO TOILETS.
FROM THE COMPETITION CENTER/FINISH TO THE QUARANTINE AREA, FOLLOW THE RED-WHITE TAPE-MARKED PATH, APPROXIMATELY 800 M.



TECHNICAL DATA

S1 - sprint wre - Râșnov			
Course:	Class:	Length[km]:	Number of controls:
A	M21E, M16, M18, M20, M35, M40	4.17	18
B	W21E, W16, W18, W20, W35, W40, M21A, M45, M50	3.78	14
C	M12, M14, W21A	2.17	11
D	M10, W12, W14, W45, M55	2.14	11
W55, M60		2.10	10
Open	OP, W10, W60-65, M70-75, M80+	2.13	12
Open Children	OP C., W70-75, W80+	1.80	11
FAMILY	FAMILY	02.04	10

PARKING → RECOMMENDED PARKING IS THE UNDERGROUND PARKING BENEATH THE CENTRAL SQUARE / FINISH AREA AND ADJACENT STREETS
PUBLIC TOILETS ARE AVAILABLE IN THE UNDERGROUND PARKING
PARKING → QUARANTINE: 800 M, FOLLOW THE MARKED PATH
QUARANTINE → START: 50 M
QUARANTINE CLOSES AT: 15:30
FINISH AREA: PIAȚA UNIRII



INFO ON THE STAGES

MIDDLE DISTANCE WRE

Competition Center – Casa Vălășoaia Restaurant
Săcele, Brașov

Coordinates: 45.55501, 25.80459

Parking and toilets available at the Competition Center

Map: 2025, 1:10,000 – MW21Elite, 1:7,500 – other categories

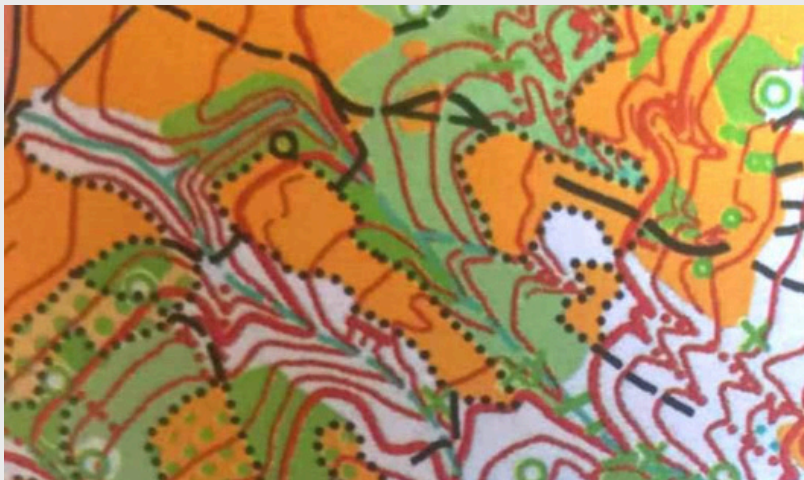
Cartographer: Florin Patraș

Course Setter: Ionuț Zincă

Terrain: Forested, moderately hilly, mixed coniferous and deciduous forest, with many clearings

Runnability and Visibility: Mostly good

Paths and Tracks: Several forest roads and trails cross the terrain



MIDDLE DISTANCE TECHNICAL DATA

S2 - MD - wre - Vălășoaia			
Class:	Length[km]:	Climb used:	Number of controls:
M21E	5,1	275	21
W21E, M35, M20, M21A, M40	4,39	220	19
W20, W21A, W35, W40, M18, M45	3,99	200	18
W18, W45, W50, M16, M50, M55	3,66	165	17
W55, W60, M60, M65	3,51	130	15
W65, W70, M70, M75	3,25	95	18
Open Tehnic	3,26	90	17
W16, M14	2,78	95	14
W75+, M80, M85+	2,31	50	12
Open Children / FAMILY	2,29	45	11
W14, M12	2,3	70	10
W12	2,26	60	11
WM10	2,22	40	10

FINISH/PARKING → START: 1000 M, MARKED WITH TAPE
TOILETS: COMPETITION CENTER, CASA VĂLĂȘOAIA
FINISH AREA → PARKING: 50 M

At Casa Vălășoaia Restaurant, after the competition, competitors can enjoy traditional Transylvanian food served from a cauldron.



INFO ON THE STAGES

LONG DISTANCE – PURSUIT

Competition Center – Valea Cărbunării Ski Jump Complex, Râșnov

Coordinates: 45.57114, 25.47101

Parking, toilets, and changing rooms available within the Complex

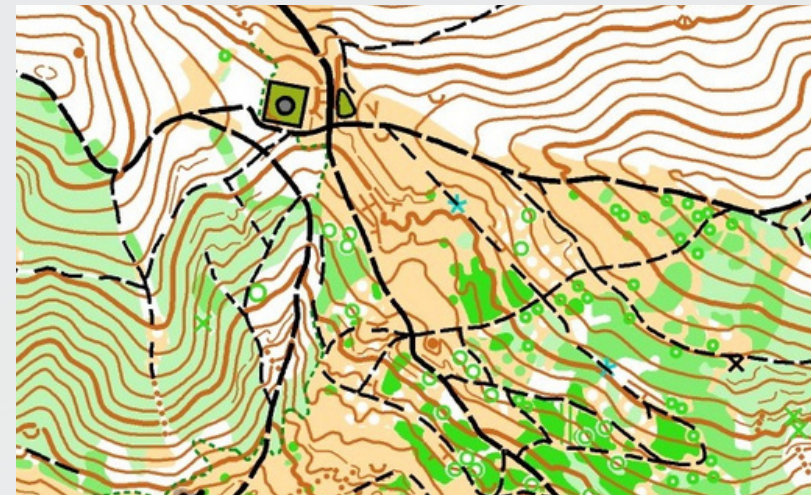
Map: 2025, scale 1:10,000 – MW21Elite, 1:7,500 – other categories

Cartographer and Course Setter: Ionuț Zincă

Terrain: Deciduous forest with a network of trails; vegetation density varies; alternating moderate and steep slopes

Runnability and Visibility: Mostly good

Paths and Tracks: Several forest roads and trails cross the terrain



TECHNICAL DATA

S3 - Long - Râșnov

Class:	Length[km]:	Climb used:	Number of controls:
M21E	7,99	490	32
W21E, M35, M20, M21A, M40	6,36	420	24
W20, W21A , W35, W40, M18, M45	5,53	350	24
W18, W45, W50, M16, M50	5,04	315	22
M55, M60	4,43	245	19
W55, W60, M65, M70	4,16	200	15
W16, M14	3,58	155	14
W14, M12	3,09	75	12
W65, W70, M75, M80	2,37	70	14
W12	2,19	50	9
WM10	2,18	50	10
Open Children / FAMILY	2,3	50	9
Open Tehnic	3,89	255	20
W75+, M85+	1,88	50	9

ARRIVAL/PARKING → START: 1000 M

PARKING → FINISH: 100 M

On Sunday, you will have the possibility to have meals in the Competition Center area:

09:00 – Coffee and juices

12:00 – 15:00 – Lunch (variety of dishes, including vegetarian options)



TOURIST AND GASTRONOMIC ATTRACTIONS

BRAȘOV

BLACK CHURCH

One of Brașov's main tourist attractions, the Black Church is one of the most representative Gothic architectural monuments in Romania, dating from the 14th–15th centuries. With a length of over 89 meters, it is considered the largest Gothic construction in Southeast Europe.

Opening Hours: Friday–Saturday: 10:00 – 18:40, Sunday–Monday: 12:00 – 18:40



OMELETT

Omelett, a gastronomic experience between the blue of the sky and the colors of the sunset. A case of practical excellence in relation to Brașov's heritage (Litera 9). Omelett is a breakfast spot, but not only that. It is a place where the architecture of old Brașov meets gastronomy, and we are very happy to have them as a partner. Each participant will receive in their kit a voucher for a unique experience at Omelett.



TIPOGRAFIA

Located in the old town, at the intersection of Diaconu Coresi and Postăvarului streets, Tipografia is an intimate place where you can spend the first half of your day socializing over breakfast and coffee, or bring your laptop for a quiet work session. In the evening, you can enjoy events such as book launches, product tastings, art film screenings, and live music concerts.

Tipografia Tea & Coffee House and Omelett are two of our long-standing partners. Each participant will receive a voucher for a 15% discount in their race kit.



RÂȘNOV



Râșnov is a small town located approximately 15 km southwest of Brașov and about the same distance from Bran, on DN73, a road that connects Wallachia to Transylvania. The main things to do are: visit the Fortress, Dino Park (the largest dinosaur-themed park in Eastern Europe, a unique and special project in Romania), Valea Cetății Cave (a small and beautiful cave where you can spend 20–30 interesting minutes), and, about 15 km away, Bran Castle (one of the most famous landmarks in Transylvania, known as the home of Count Dracula. The 14th-century castle and fortress, situated on a hill, house a collection of furniture and artworks that once belonged to Maria, the last queen of Romania).

THE RÂȘNOV FORTRESS

Râșnov Fortress was originally built as a castle by the Teutonic Knights between 1211 and 1225.

Râșnov was first mentioned in 1331 under the name Rosnou and again in 1388 as villa Rosarum. Although the village was destroyed many times throughout its history by Tatars, Turks, and Vlachs, the fortress was conquered only once, in 1612, by Gabriel Bathory.



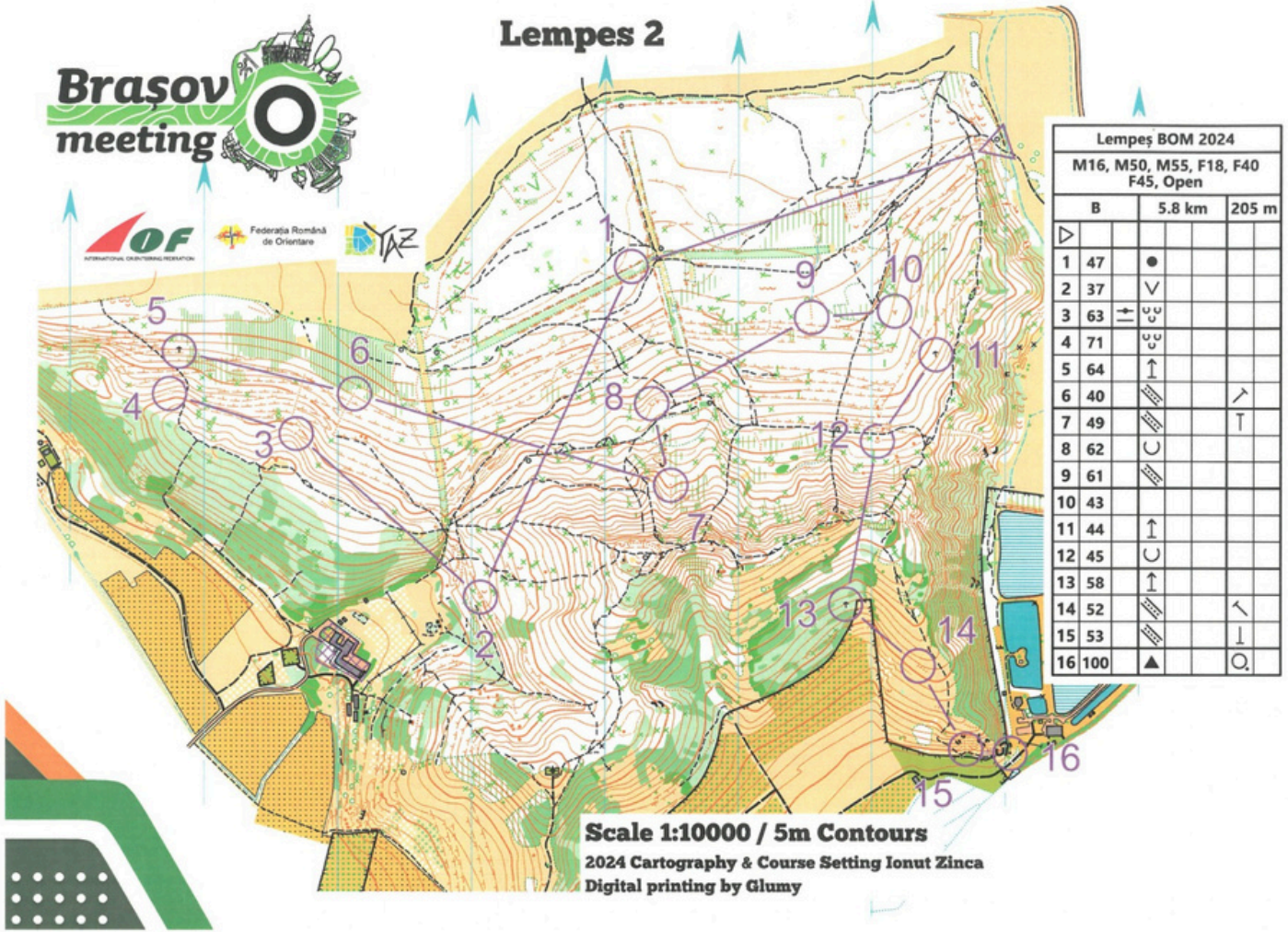
OLD MAPS BRASOV O-MEETING

EXCEPT FOR THE PROLOGUE, ALL
THREE STAGES FEATURE NEW MAPS,
CREATED IN 2025.

VULCAN



Lempes 2



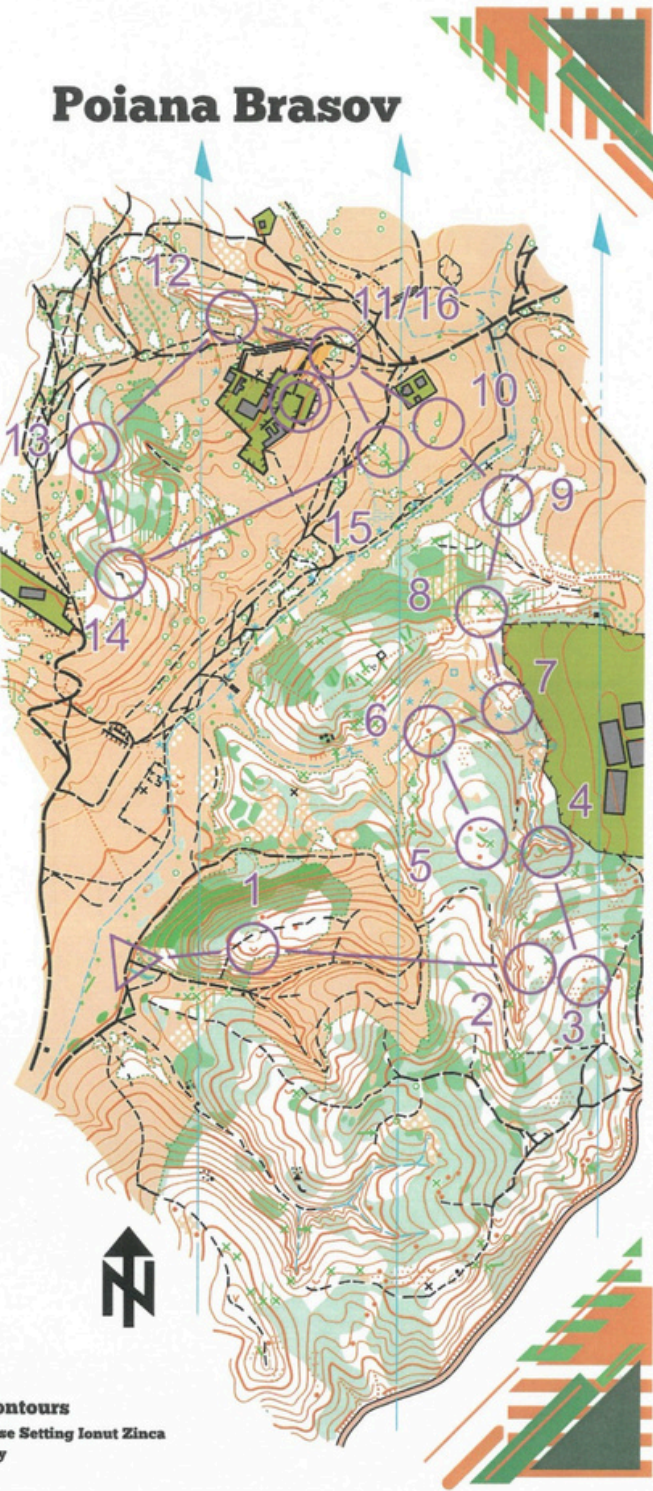
Lempes BOM 2024				
M16, M50, M55, F18, F40 F45, Open				
B	5.8 km	205 m		
1	47	●		
2	37	∇		
3	63	↔		
4	71	↕		
5	64	↑		
6	40	↘		↗
7	49	↗		↑
8	62	↖		
9	61	↖		
10	43			
11	44	↑		
12	45	↖		
13	58	↑		
14	52			↘
15	53	↖		↑
16	100	▲		Q



Poiana Brasov



BOM PoianaBv 2024				
M16, M50, M55, F18, F40 F45, OPEN				
B	3.3 km	180 m		
1	37	↖	↗	
2	32	∇		
3	31	↖	●	○
4	33	↖		↑
5	34	↓	↖	
6	66	↘	●	○
7	73	↖		○
8	68	↖	⊗	○
9	65	↖	⊗	○
10	58	↑	⊗	○
11	100	⊗		○
12	59	↖	↗	
13	72	⊗		○
14	62	↖		⊗
15	57	⊗		○
16	100	⊗		○



Scale 1:7500 / 5m Contours
2024 Cartography & Course Setting Ionut Zinca
Digital printing by Glumy

PARTNERS

INSTITUTIONAL PARTNERS

PROJECT CO-FOUNDED BY THE BRAȘOV COUNTY
COUNCIL



Consiliul Județean
Brașov



Federația Română
de Orientare



PRIMĂRIA ORAȘULUI
RÂȘNOV



PRIMĂRIA
MUNICIPIULUI SĂCELE

